

Edgewood Commons 5 PUD Design Application

Edgewood St NE,
Washington, DC 20017

Submission Date: November 25, 2020



Zoning Commission Presentation December 17, 2020

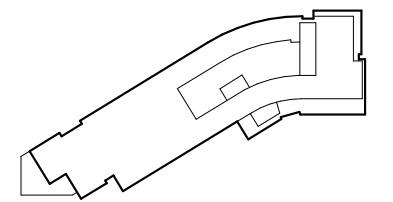
Applicant:	Edgewood Commons 5 LLC 8403 Colesville Road #1150 Silver Spring, MD 20910
Architect:	Wienczek + Associates Architects + Planners 1100 Vermont Avenue NW 8th Floor Washington DC 20005
Landscape Architect:	Wiles Mensch Corporation 11860 Sunrise Valley Drive #200 Reston VA 20191
Civil Engineer:	Wiles Mensch Corporation 11860 Sunrise Valley Drive #200 Reston VA 20191
Structural Engineer:	Ehlert Bryan 1420 K St NW, Suite 1100 Washington, DC 20005
MEP Engineer:	Loring Consulting Engineers 1130 Connecticut Avenue NW Suite 750 Washington, DC 20036
Sustainability:	Sustainable Building Partners 2701 Prosperity Ave., Suite 100 Fairfax, VA 22031
Traffic Consultant:	Gorove Slade 1140 Conecticut Ave. NW Washington, DC
Land-Use Legal:	Goulston & Storrs 1999 K Street NW Suite 500 Washington, DC



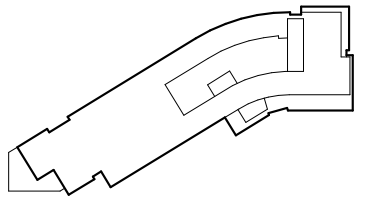
Cover | Edgewood 5

1

Washington, DC
November 25, 2020
ZONING COMMISSION
District of Columbia
CASE NO.66-68A
EXHIBIT NO.33B



View From the Northwest



View From the East



Enterprise



GOROVE SLADE

Exterior Rendering

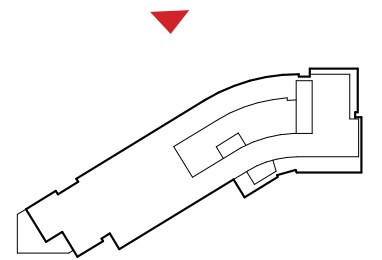
Edgewood 5



Washington, DC
November 25, 2020

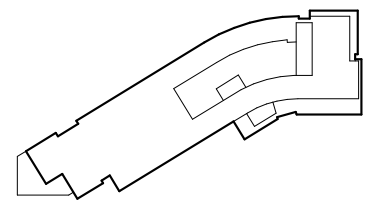


View From Edgewood Street NE (North)



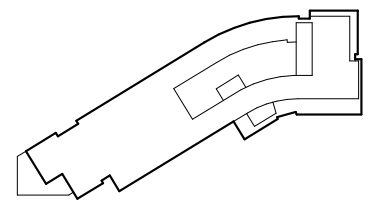


View From 4th Street NE (West)



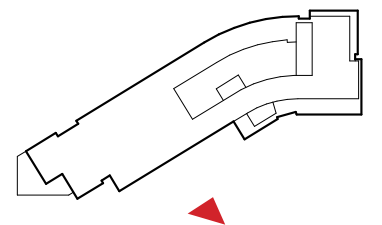


View From Adjacent Development (South West)



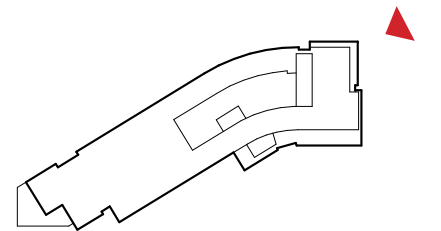


View From Driveway (South West)





View From Edgewood Campus Interior (North East)



Enterprise[®]

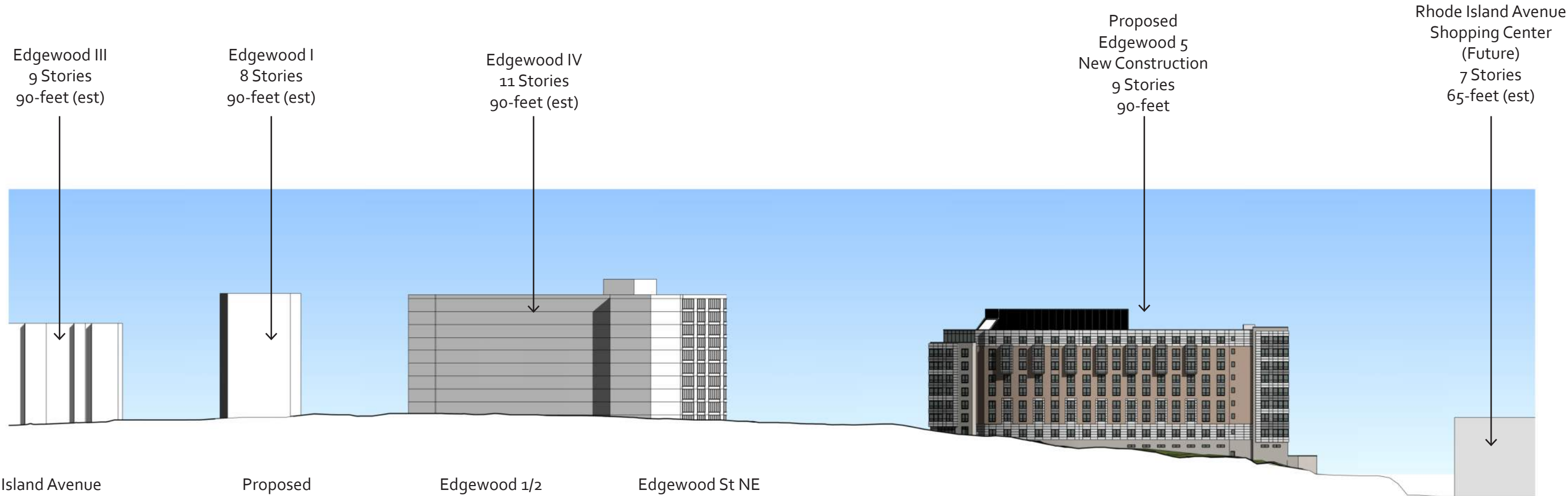


GOROVE SLADE

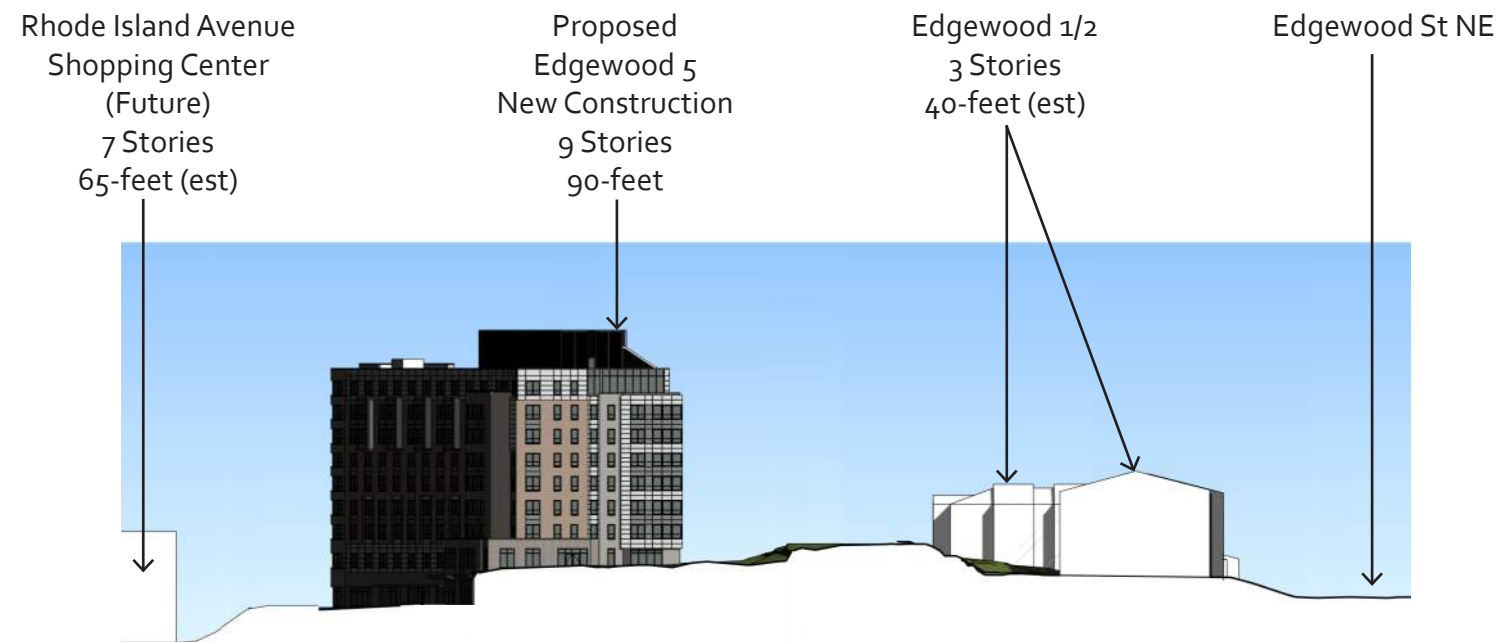
Supplemental Rendering **Edgewood 5**



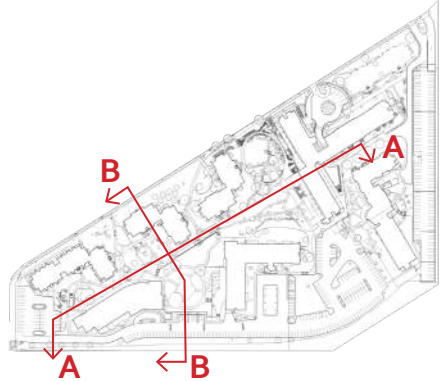
Washington, DC
November 25, 2020



Section A-A



Section B-B



Drive Ailse Access to 4th Street NE



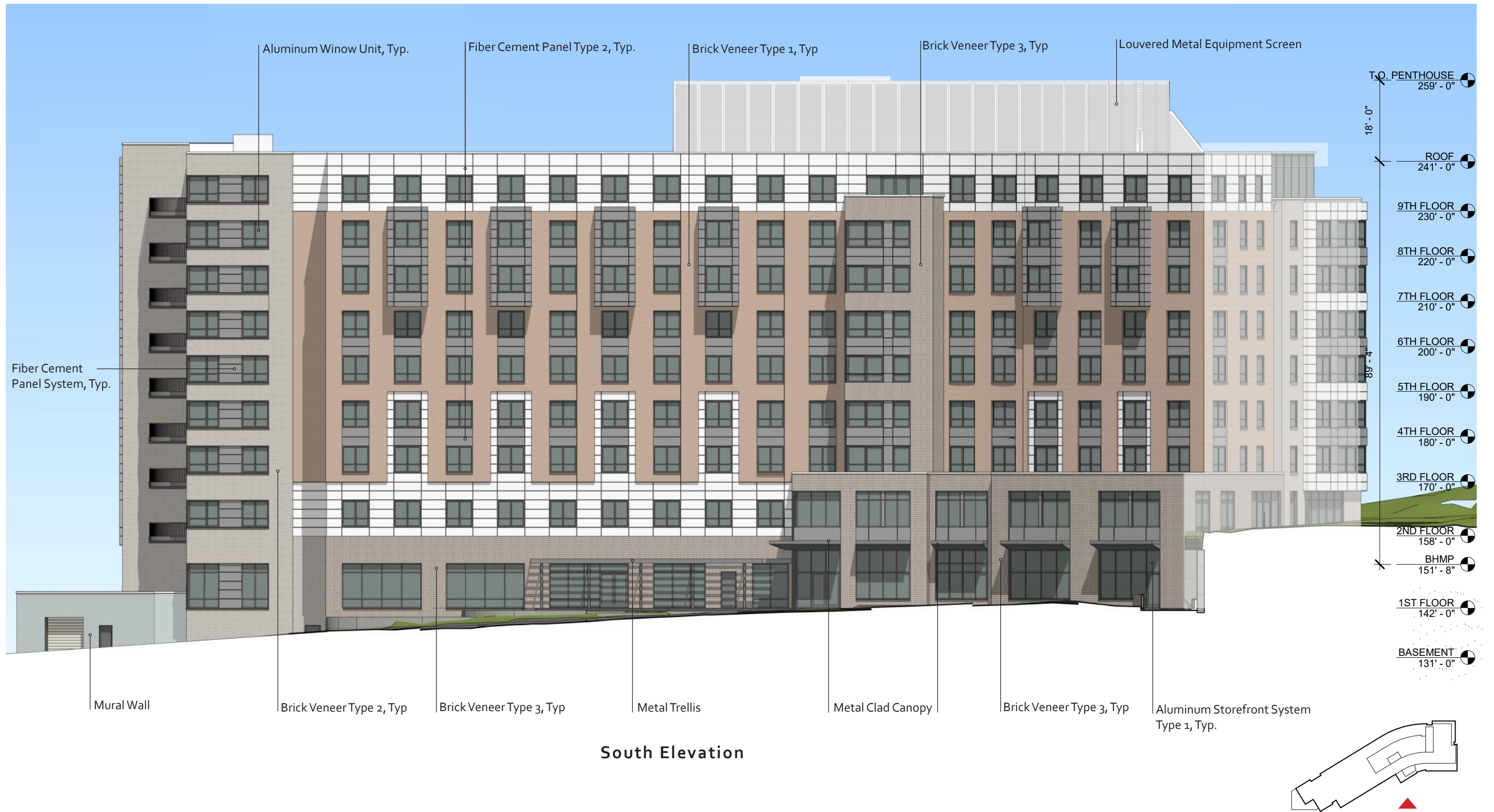
Enterprise

WMC
WILES MENICK CORPORATION
CELEBRATING 30 YEARS

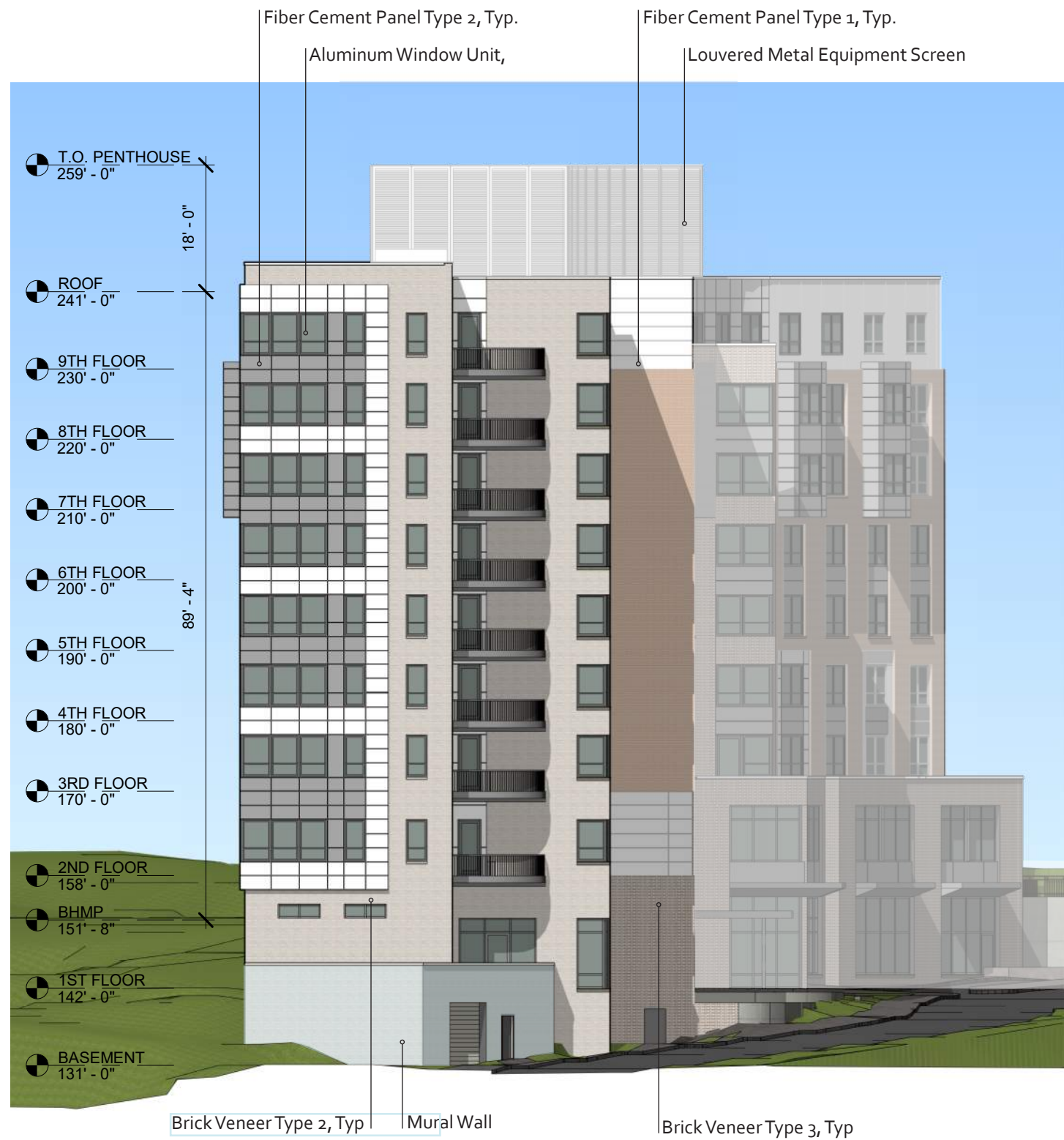
WMC goulston&storr **GOROVE SLADE**



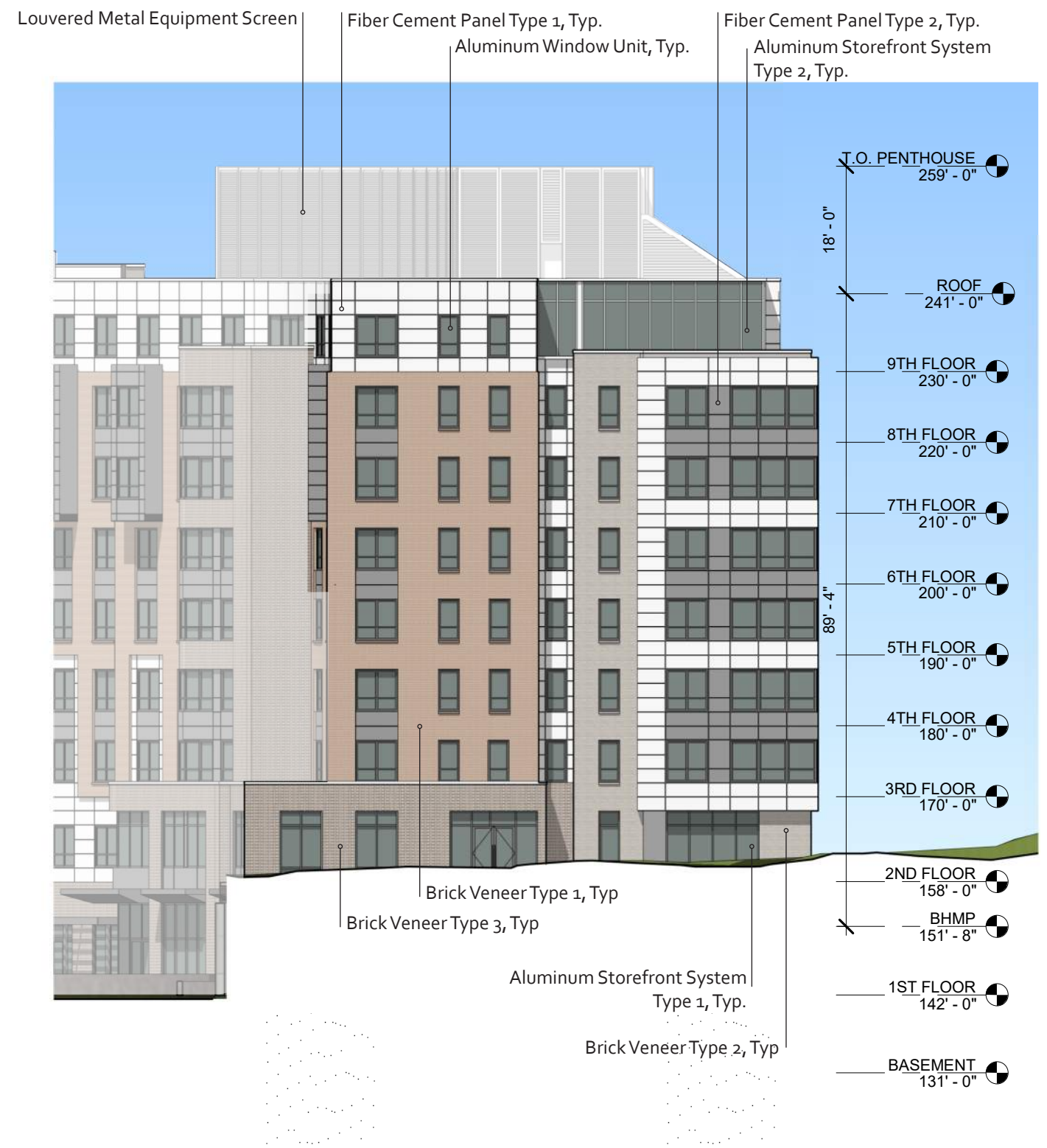
Site Sections | **Edgewood 5**



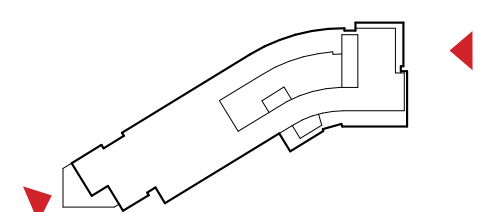
South Elevation



East Elevation (Facing Campus)



West Elevation (Facing 4th Street)





North Elevation



East Elevation

- Fiber Cement Panel Type 1, Typ.
- Brick Veneer Type 1
- Aluminum Window Unit, Typ.
- Brick Type 1 Sill, Typ.



- Aluminum Storefront System Type 2, Typ.
- Pre-Finished Metal Coping, Typ.
- Aluminum Window Unit, Typ.
- Fiber Cement Panel Type 2, Typ.
- Fiber Cement Panel Type 1, Typ.
- Brick Type 2 Sill, Typ.



West Elevation

- Brick Veneer Type 2, Typ
- Fiber Cement Panel Type 2, Typ.
- Fiber Cement Panel Type 1, Typ.
- Aluminum Window Unit, Typ.



- Pre-Finished Metal Coping, Typ.
- Fiber Cement Panel Type 1, Typ.
- Aluminum Window Unit, Typ.
- Cast Stone Sill, Typ
- Brick Type 2 Sill, Typ
- Brick Veneer Type 1, Typ



Enterprise



GOROVE SLADE

Exterior Elevation Details | **Edgewood 5**





North Elevation



South Elevation



Fiber Cement Panel Type 2, Typ.

Brick Veneer Type 1, Typ

Fiber Cement Panel Type 2, Typ.

Aluminum Window Unit, Typ.

Brick Type 1 Sill, Typ

Brick Veneer Type 1, Typ

Fiber Cement Panel Type 1, Typ.



Pre-Finished Metal Coping, Typ.

Fiber Cement Panel Type 1, Typ.

Brick Veneer Type 3, Typ

Fiber Cement Panel Type 2, Typ.

Aluminum Window Unit, Typ.

Brick Type 1 Sill, Typ

Fiber Cement Panel Type 1, Typ.

Aluminum Window Unit, Typ.

Fiber Cement Panel Type 2, Typ.

Brick Veneer Type 1, Typ



South Elevation



Enterprise



WMC *goulston&storr* **GOROVE SLADE**

Exterior Elevation Details | **Edgewood 5**

